



Irene Wortham CENTER

ANNUAL REPORT 2022-2023



828-274-7518



mhenry@iwcnc.org



www.ireneworthamcenter.org



916 W Chapel, Asheville, NC 28803

Letter from our CEO

Matt Henry President and CEO

I am happy to present to you our Annual Report. With Covid-19 slowing and additional funding coming to an end, 2022-2023 has been a year of financial ups and downs for IWC and IWRC, Inc. We have continued to struggle with staffing which has led to the highest amount of overtime paid out in the history of the centers. On the other side of things, we have received more individual grants for projects than we ever have in the history of our organizations! With all of this being said, we continue to provide high-level, quality care for the individuals that we serve. We are also embarking on a great adventure to raise 14 million dollars to replace our aging Early Learning Center and our Dogwood Home/Administration Building. Thanks to our community and donor support, we continue to move forward as an organization with anticipation and hope for the future! Wishing each of you a blessed and prosperous New Year!

-Matt

Our Mission

**Empowering children
and adults with
developmental or
socioeconomic
challenges to lead
healthy, happy, more
independent lives
since 1961.**



Early Learning Center



In 2022-2023, the Early Learning Center experienced notable highs and lows. Classroom A was successfully re-opened, resulting in all classrooms being fully operational. The center secured the Buncombe County Early Childhood Education grant, that worked to fund essential classroom supplies and staff salaries. Furthermore, efforts were underway to upgrade classroom equipment, a change expected to positively impact student behavior. Since the Covid-19 pandemic, the ELC has struggled with staffing; however, only three positions remain to be filled for the center to be fully staffed.

The year also presented challenges for the ELC. Trouble with the air conditioning units forced the temporary closure of four classrooms for a week, disrupting regular activities. Refrigerator issues added to the list of setbacks, effecting the day-to-day operations of the center. Additionally, there were concerns about overall structural issues that needed attention. Despite these challenges, the ELC remained dedicated to overcoming obstacles and provided a conducive learning environment for its students.



At the Early Learning Center, children ages six weeks to Pre-K with and without developmental challenges learn, play, and grow together in an integrated setting.

Meet Lucas



"At IWC we found hope, support, and community for our child, who is on the spectrum. Finding an inclusive school that is also able to support extra needs is hard to find, especially at the younger years. Our family is so grateful to have been able to be at IWC for the past two years. The staff, therapists, and teachers truly bring the quote "it takes a village" to life. We will be forever grateful for this opportunity."

- Cassandra: Mother of Lucas

Residential Program



In the Residential Program, there have been several positive developments to highlight. The rooms at

Rose Street have undergone a significant makeover, featuring updated decor and furniture, along with the addition of upgrades to the sensory room. Notable kitchen renovations have taken place in Dogwood, accompanied by fresh paint throughout the house. The program is currently operating at maximum capacity in the houses.

Furthermore, there has been a resurgence in outings and community engagement activities, including partnerships such as the collaboration with Pisgah Forest Service. This collaboration created an amazing fishing trip to Max Patch pond. Other outings included visits to the Nature Center and trips to Cherokee. Notably, Azalea received perfect scores on their annual state inspection, marking a significant achievement and a first for the company.

Despite these positive aspects, the Residential Program has faced challenges, particularly in the realm of staffing. While there has been improvement, lingering difficulties have persisted since the onset of the COVID-19 pandemic. Staffing remains an area of focus for ongoing enhancement within the program.



Irene Wortham Residential Center, Inc. has three residential homes that are licensed as Intermediate Care Facilities for persons with intellectual and developmental disabilities. Our 24 residents receive comprehensive, around-the-clock individualized care from expertly trained staff.

Meet Lizzie



We are so grateful for the good care our daughter Elizabeth has received at Irene Wortham Center. Azalea House has been her home for over twenty years and she goes to ADA during the week. Staff at both places have taken loving care of her, taught her valuable skills, and provided her with fun activities. The other residents, clients and staff are a wonderful community for her to be a part of."

- Ellie: Mother of Lizzie

Adult Day Activity Center



The Adult Day Activity Center has experienced both highs and lows. Enrollment in the center has increased, reflecting a growing need in the program. There has been a notable rise in community engagement, highlighted by partnerships such as the Bloom exercise program, which has been made more inclusive for consumers, and dedicated music days. The center has also taken steps to update its facilities by installing new lifts in the bathrooms, to improve accessibility and comfort for consumers, particularly during changing times. Additionally, the Alternative Family Living Program is flourishing, marked by the licensing of seven new homes and the addition of three more houses to accommodate the community needs.

However, there have been challenges as well. Staffing has presented obstacles that the center is actively addressing to ensure smooth operations and quality care for its consumers. Unfortunately, the center has also faced the difficult reality of three consumers passing. While we mourn our beloved friends and family, these losses emphasized the complex nature of the center's role in the lives of its participants in the community it serves.



The Adult Day Activity Program provides individuals with intellectual and developmental disabilities a familiar and flexible environment. Each consumer follows an Individualized Service Plan with specific goals to meet his or her needs and to guide participants through purposeful communication, relaxation, and self-expression.



Why a Capital Campaign?

For over 60 years, Irene Wortham Center has helped children and adults with developmental and/or socio-economic challenges lead healthy, happy, and independent lives. We believe in the value and promise of every person and strive to empower individuals to reach their full potential from birth to end of life.



Irene Wortham Center welcomes children of all abilities. We are one of two Developmental Day programs in Buncombe County that serve students with developmental disabilities and/or those facing socio-economic challenges in an inclusive environment. Our center offers fundamental learning and growth opportunities to over 100 children ages six weeks to five-years-old. The current building, which opened in 1970 and still reflects mostly original features and design aspects, does not allow for a modern educational experience.

We are launching a Capital Campaign to raise \$14,000,000 to build a new Early Learning Center that will better serve our students and expand access to quality childcare in Asheville. We would be honored if you would consider partnering with Irene Wortham Center to help us build our new school!

Board of Directors

Wes McCall
Chair

Chad Whittemore
Treasurer

Rita Maddux
Vice Chair

Dr. Larry Fisher
Secretary

Rhyna Simmers

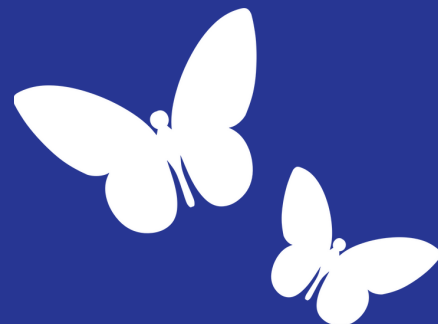
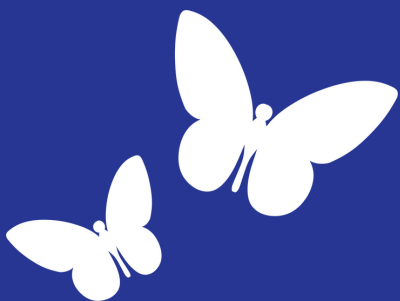
Laura Brown

Jeff Hicks

Jason Gast

Mickey Dale

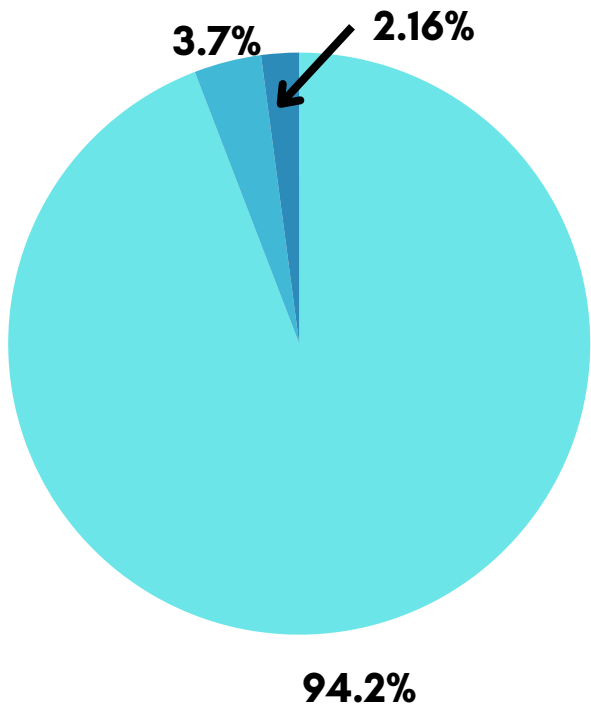
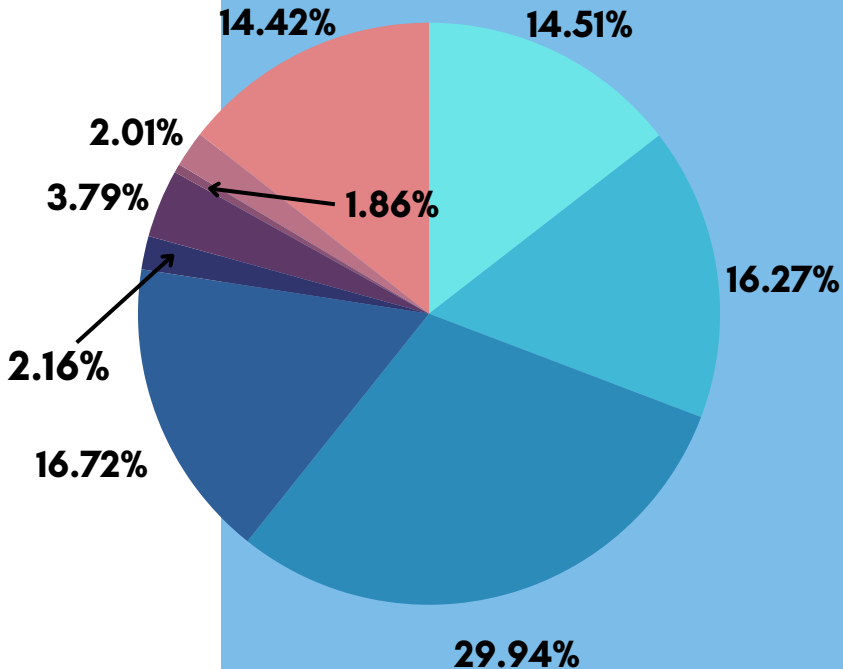
Dexter Hazel



Revenue

IWC REVENUE STREAMS

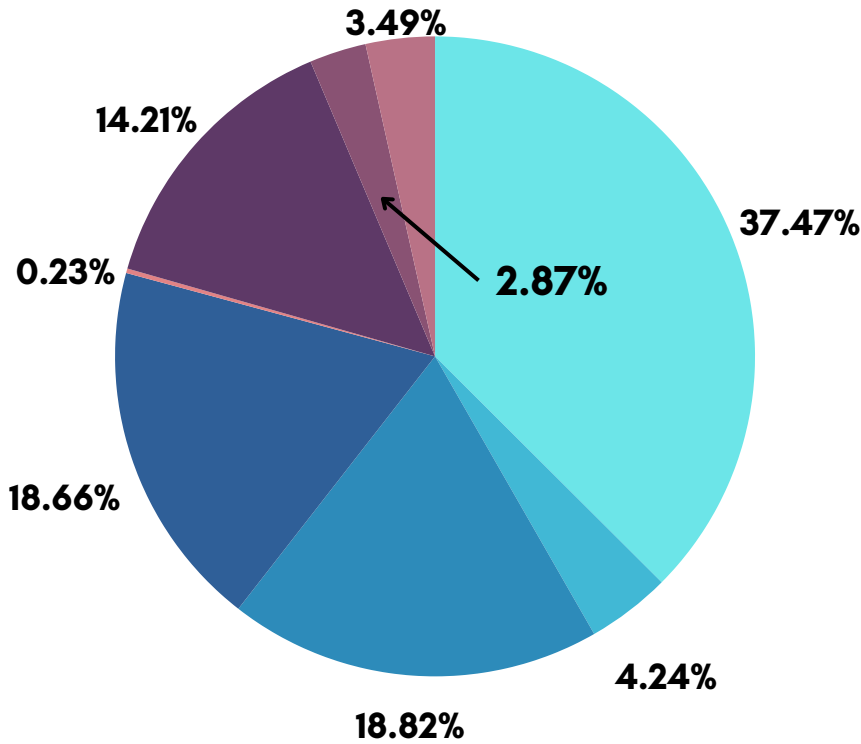
- PUBLIC SCHOOLS AND VOUCHERS
- FUNDRAISING AND CONTRIBUTIONS
- MEDICAID
- PRIVATE PAY
- CACFP
- NC PRE-K
- UNITED WAY
- INVESTMENTS
- OTHER



IWRC REVENUE STREAMS

- MEDICAID
- GRANTS AND OTHER ASSISTANCE
- INVESTMENTS

Expenses

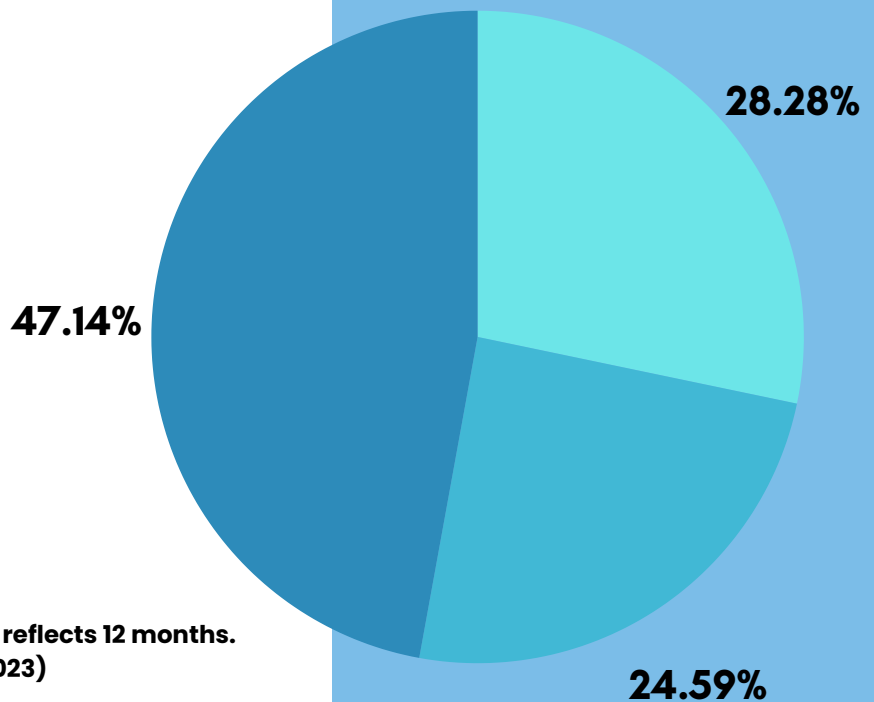


IWC EXPENSES

- ELC
- OVERHEAD AND MAINTINENCE
- ADMIN
- ADA
- SUPPORTED EMPLOYMENT
- AFL PROGRAM
- COMMUNITY NETWORKING
- DEVELOPMENT

IWRC EXPENSES

- AZALEA
- DOGWOOD
- ROSE



The financial information in this report reflects 12 months.
(July 1, 2022–June 30, 2023)

Irene Wortham Center, Inc. and Irene Wortham Residential Center, Inc. are tax-exempt 501(c)(3) organizations.

Additional financial information is available upon request.

Thank you

As we reflect on the past year, we are filled with gratitude for the dedication, hard work, and unwavering commitment that each member of our team has demonstrated. On behalf of the executive team, we extend our sincere appreciation to our exceptional team members and Board of Directors.

Your collective efforts have been the driving force behind our organization's success. Through your tireless work, compassion, and expertise, we have achieved remarkable milestones and maintained our commitment to providing outstanding care to those we serve.

To our DSP workers, your dedication to the well-being and care of our clients has not gone unnoticed. We see the compassion and resilience that make a profound impact on the lives of those you support, and we are truly grateful for the difference you make each day.

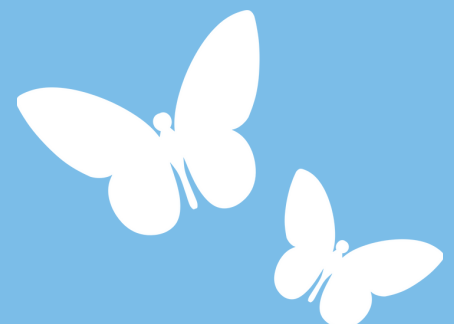
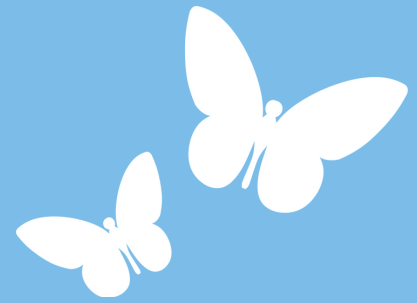
To our teachers, your passion for education and your ability to inspire and guide our students has been integral to the growth and development of our programs. Your commitment to fostering an environment of learning and creativity is commendable.

To our esteemed board members, your strategic guidance, insightful perspectives, and unwavered support has been invaluable. The leadership you provided has played a pivotal role in steering our organization through challenges and ensuring its continued success.

As we embark on the journey ahead, we are confident that the strength of our team will propel us to even greater heights. Your dedication to our mission and the well-being of our community is truly appreciated.

Thank you for your hard work, resilience, and commitment. We look forward to another year of collaboration and success.

Sincerely,
Executive Team



Acknowledgements

828 Family Pizzeria	Claying Around	Jim Stickney	Rebol Family Dentistry
Aloft Asheville Downtown Hotel	Crescent Health Solutions	Joan Pippin	Red's Radiant Cleanings
Amazon Smile Foundation	CVS	John C. Bernhardt Jr.	Republic Services
Another Broken Egg	Cynthia Gosnell	Judith Doyle	Rex E. Ballard
Apollo Flame Bistro	Debbie Terry Bailey	Knights of Columbus Council #8923	Ring-Free Communications
Arby's	Dennis Michele	Lakeview Putt and Play	Roald Kirby
Asheville Art Museum	Diana G. Wortham	Laura Breyfogle	Roger Smith
Asheville Community Theatre	Dollar General	Lawrence Pittman	Stephanie Lytle
Asheville Mountain Kitchen	Early Girl Eatery	Lindsey Phillips	Steven C. Hageman
Asheville Pinball Museum	Farm Burger	Louis Cundiff	Strada Italiano
Asheville Symphony Orchestra	Farmer Jane Soaps	Maggi Ball	Stuart Weidie
Barbara Guffy	French Broad Chocolate Factory	Marguerita B. Veronesi	Sona Pharmacy
Bill Satterfield	Friend Rendi	Melanie Phillips	Sun Soo Martial Arts
Bob Adams	Green Sage	Michelle A. Buckner	The Cantina
Bonfire.com	Harvey Jenkins	Nancy David	Trader Joe's
Budweiser Of Asheville	Hillman Beer	Nancy Senneff	Twisted Laurel
Buncombe County Community Recreation Grant	Hillsdale Fund, Inc.	Natasha Michaels	United Way Of Asheville and Buncombe County
Buncombe County Early Childhood Education and Development Grant	Hi-Wire Brewing	NCDHHS - Division Of Child Development and Early Education	United Way of Henderson County
Burial Beer	Huli Sue's	Othella Johnson	US Cellular
Cantina Louie	Jack A. Pierce	Outback Steakhouse	Vinnie's Neighborhood Italian
CFWNC	James Lee	Patrice Vincent	Westmoreland and Scully
Charles Kirby	James McLean	Paul Linton	Whit's Frozen Custard
Charlie Kelly	Jason Gast	Phillip H. Satterfield	William H. Dotson
Chris Young	Jeff Hicks	Prestige Subaru	Wortham Center For Performing Arts
	Jeffrey Tuckey		